



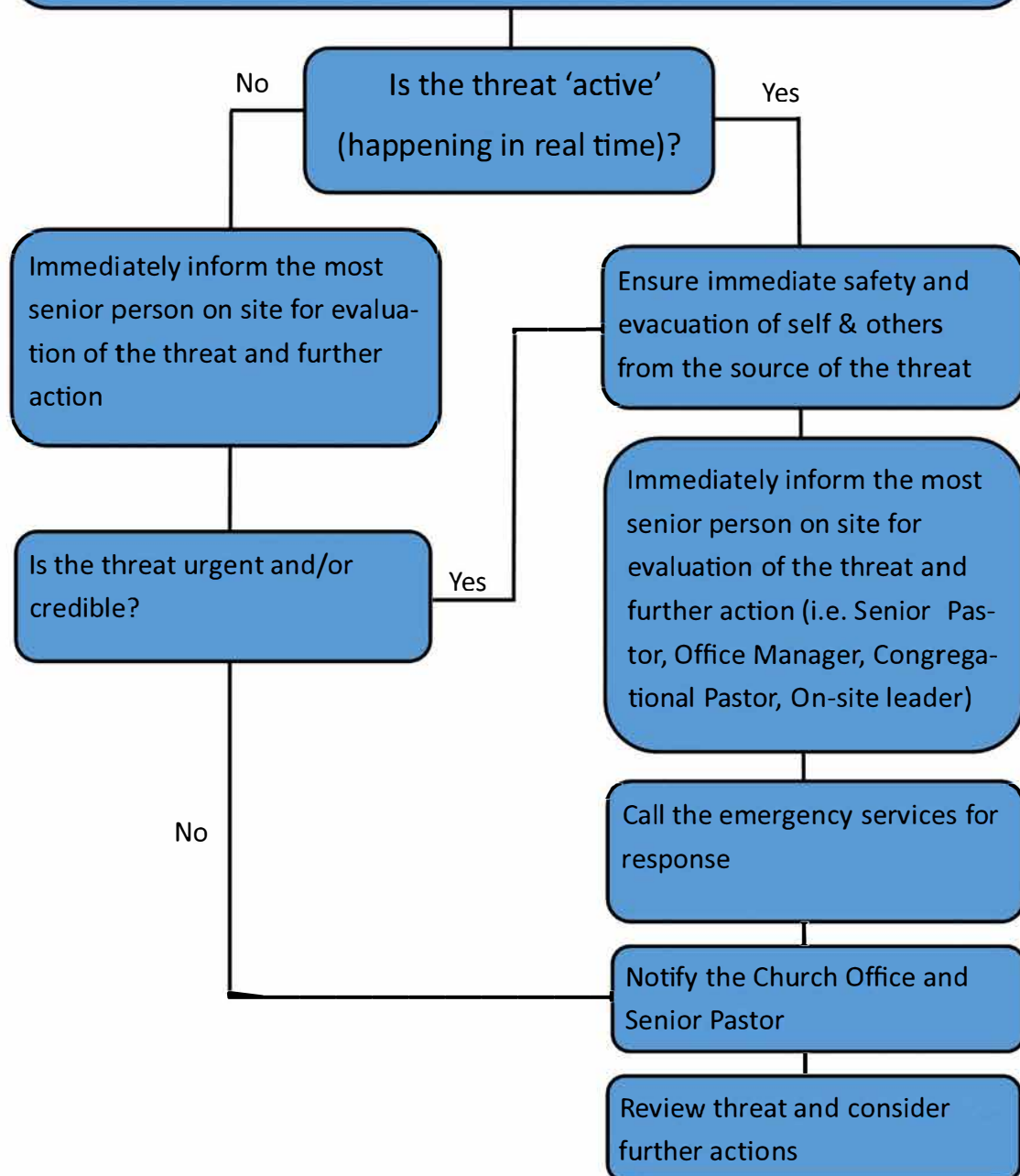
**Auckland Baptist Tabernacle  
Security Threat  
&  
Emergency Procedures  
Quick Guide  
Version 1.0 October 2018**

## Index

	Page number
Security Threat & Emergency Procedure Flowchart	2
Contact Information	2
Aggression (Physical/Verbal)	4
Trapped in Lift	5
Fire & Evacuation Procedures	6
Armed Hold Up/Robbery	7
Medical Emergency	8
Suspect Parcel	9
Suspicious Activity/Unauthorised Visitor or Media	10
Flooding/Storm/Gale Force Wind	11
Earthquake	12
Hostages	13
Sexual Assault	14
Gas Leak	15
Power Outage	16
Bomb Threat	17
Hazardous Materials Alert	18
Active Shooter	19
Safe Evacuation of People with Disabilities	20

# Security Threat & Emergency Procedure

Earthquake—Fire—Natural Disaster—Terrorism—Violence—Bomb Threat—  
Break In—Problem Person—Hazardous Substance—Infectious Disease



## Contact Information

<b>Tabernacle Office</b>	<b>Ph 377 4063</b>
<b>Church Manager (Andrey Issabeyev)</b>	<b>Ext 7803 Mobile 022 397 4080</b>
<b>Church Administrator (Jenny Hughes)</b>	<b>Ext 7801 Mobile 027 668 9739</b>
<b>Church Caretaker (Bahram Nasroollahi)</b>	<b>Mobile 021 149 7409</b>
<b>Senior Pastor (Neil Baker)</b>	<b>Ext 7805 Mobile 027 614 2494</b>
<b>All Nations Congregation Pastor (Ken Kyte)</b>	<b>Ext 7804 Mobile 027 368 1615</b>
<b>Friends of Friends Pastor (Paul Chang)</b>	<b>Ext 7809 Mobile 027 937 8999</b>
<b>Friends of Friends Co-Leader (Bruce Knox)</b>	<b>Mobile 021 224 5669</b>
<b>Global Congregation Pastor (Mike Van Der Vlugt)</b>	<b>Ext 7808 Mobile 021 158 9483</b>
<b>Global Associate Pastor (Gordon Stewart)</b>	<b>Ext 7807 Mobile 021 252 9219</b>
<b>Mandarin Congregation Pastor (Kok Soon Lee)</b>	<b>Ext 7806 Mobile 021 151 2298</b>
<b>All Nations Children's Worker (Catherine Park)</b>	<b>Mobile 021 048 5281</b>
<b>Governance Group Chair (Andrew Lowe)</b>	<b>Mobile 021 255 5433</b>

**Trained in First Aid:**

**None at present**

# Aggression (Physical/Verbal)

## Obey Instructions - Keep Calm

1. Remove yourself and others from immediate danger if safe to do so. Activate the emergency alarm if needed (white box)
2. Ensure the safety of staff, church members and others.
3. Keep a safe distance from person and note escape routes and try to get close to these
4. Observe the aggressor for:
  - Physical features or clothing worn
  - Distinguishing features, voice or tattoos
  - Any weapons
  - Anything touched or taken
  - Escape route, vehicle.
5. When able, Contact Police Dial 111 (if possible out of hearing or visual sight of person) giving **exact location** and **details of events**
6. State if incident involves staff, members of the congregation, visitors or others.
7. State if Medical Assistance is required.
8. Write down all you observed.
9. Notify the Church Office on   377 4063  
Church Administrator       Ext 7801  
Office Manager               Ext 7803

# Trapped in Lift

## If You Are Ever Trapped In an Lift

1. Press the **Emergency/Bell button**.
2. Use the elevator phone and ring the number displayed. (If for any reason the phone does not work, continue ringing the bell until someone outside the elevator has heard you).
3. Remain calm.
4. State which building and level you believe you are on or between

## If You Observe a Malfunction From Outside an Elevator

1. If you think someone may be trapped inside, **contact the TabTrust office on 373 3950. After hours contact the Church Caretaker on 021 149 7409.**
2. If they can hear you, try to assure trapped person(s) that help is on the way.
3. **DO NOT ATTEMPT TO OPEN LIFT DOORS OR RELEASE OCCUPANTS YOURSELF**
4. Should occupants suffer a medical condition while trapped contact **Emergency Services -Fire Dial 111**

# Fire & Evacuation Procedures

## If You See or Suspect a Fire

### **WARN and ALERT OCCUPANTS NEAR FIRE**

**REMOVE** anyone in immediate danger.

**ACTIVATE** nearest emergency alarm (white box)

### **DIAL 111 REQUEST FIRE SERVICE**

- **GIVE exact location and type of fire** (Speak Clearly, Stay Calm)
- **Notify the Church Office on 377 4063 ext 7801 or after hours contact the church Caretaker 021 149 7409**

**CONTAIN** fire by closing doors, turn off machinery or processes (if it is safe to do so).

**EXTINGUISH** the fire (only if safe to do so, DO NOT put yourself at risk).

If the fire is uncontrollable – **EVACUATE IMMEDIATELY!**

### **On the sounding of the fire alarm:**

Leave the building immediately by the nearest Escape Route and Indicated **EXIT**

- The Office Manager is the designated Building Warden. If this Office Manager is not on site then the most senior staff member or ministry leader on site will assume this role. Pastors and ministry leaders are responsible to ensure their congregations and groups safely evacuate the building and go to the Assembly Area
- Relocate disabled persons who are unable to **EXIT** via stairs in a safe place and report location to Building Warden.
- Report to your designated assembly area.
- Do Not Re-Enter Building until the “**ALL CLEAR**” **INSTRUCTION** is given by either the Fire Service or Building Warden.

# Armed Hold-Up/Robbery

## Obey Instructions - Keep Calm - No Heroics

Do exactly as asked.

Avoid eye contact.

Observe:

- Physical features
- Clothing worn
- Distinguishing features including voice, hair, tattoos
- Scars
- Any weapons
- Anything touched, or taken
- Escape route, vehicle.

When safe, **DIAL 111 REQUEST POLICE** and state “**ARMED HOLD-UP**”, giving **exact location** and **details of events**.

**Notify the Church Office on 377 4063 ext 7801**

Request all witnesses to remain.

Restrict entry to the area until Police or Senior Church staff arrive.

Do not touch anything within the scene.

Write down all you observed.



# Medical Emergency

Call out for the assistance of a first aider

Immediately **Dial 111** for an **Ambulance** if person is experiencing a life threatening medical emergency

Contact the **Church Office** on **377 4063** ext 7801

If you are trained or confident in First Aid, provide emergency assistance until the arrival of an ambulance or qualified medical expert.

## Stay Calm, Stop and Think

### Remember Patient Management Plan **SRABCDS**

- |                         |  |
|-------------------------|--|
| <b>S</b> afety          | <b>Check Safety for Self, bystanders and patient(s)</b>                                |
| <b>R</b> esponse        | <b>Check Response using voice and touch</b>  |
| <b>A</b> irway          | <b>Open and Clear the Airway</b>   |
| <b>B</b> reathing       | <b>Look, Listen and feel for Breathing or other signs of life</b>                      |
| <b>C</b> ompression     | <b>Give 30 Chest Compressions at approximately 100 per minute, then give 2 breaths</b> |
| <b>D</b> efibrillation  | <b>Attach AED as soon as available.</b>  |
| <b>S</b> evere Bleeding | <b>Check for Severe Bleeding</b>   |

## CHECK FRONT SHEET FOR FIRST AIDERS

# Suspect Parcel

## BIOLOGICAL OR POWDERED SUBSTANCES

### STOP What You Are Doing and Put the Item Down!

Do not smell, touch, taste, shake or empty contents of article or substance.

Place the envelope or package into a plastic bag or container

Turn off any equipment that could disturb air flow e.g. Fans or Air Conditioning.

Where there is a likelihood of contamination, stay where you found the article and step about 2 metres away. This includes any people directly next to you.

Immediately **Dial 111 REQUEST POLICE** and state “**SUSPECT PARCEL**”. Provide as much **detail of the item** as you can. Do not use a mobile phone in close proximity.

**CONTACT Church Office on 377 4063 ext 7801**

If anyone is contaminated, isolate the person and call for medical assistance.

If possible ask another person who was not in the immediate area to notify the Office Manager or person in charge immediately who will arrange a temporary cordon of the area.

Do not allow others into the isolation area unless it is an emergency situation.

Follow the instructions from the Office Manager and EMERGENCY SERVICES

# Suspicious Activity/Unauthorised Visitor or Media

Notify the Church Office on 377 4063 ext 7801 and state “**SUSPICIOUS ACTIVITY**”, giving **exact location** and **nature of problem**.

Alert other staff.

Observe situation and report to Tabernacle staff when they arrive.

Tabernacle staff will alert Police if necessary.

## Unauthorised Visitor

**Notify the Church Office on 377 4063** ext 7801 and request assistance from Tabernacle staff if any problems arise with Visitors.

## Unauthorised Media

1. DO NOT give information or be engaged in conversation.
2. Advise the Church office immediately.
3. If necessary, notify the Church Office on 377 4063 ext 7801 **and state “UNAUTHORISED MEDIA”** to request assistance from **Tabernacle staff**

**IF PERSON BECOME AGGRESSIVE OR A THREAT IMMEDIATELY CALL POLICE**

# Flooding/Storm/Gale Force Wind

Remove Anyone From Immediate Danger If Safe To Do So

## Flooding

If the building is in danger of being flooded, evacuate all staff, church members and visitors to a safe area unaffected by flooding. Otherwise, do not evacuate unless instructed by your Building Warden, church staff member or Emergency Services.

**Dial 111** request **FIRE SERVICE** where life threatening situation exists

**Notify the Church Office on 377 4063 ext 7801** and state **“FLOODING”**. State flooding locale and location of evacuees.

Switch off any electrical equipment and gas that could be affected by water.

Move any chemicals, documents, equipment and valuables to a safe area if time.

## Storm/Gale Force Wind

1. Move all people away from windows.
2. Close all curtains, drapes and blinds.
3. Shelter in strongest part of building (e.g. Central Corridors).
4. Clear large areas with glass windows, glass atriums, or glass roofs.
5. Stay inside.
6. **Notify the Church Office on 377 4063 ext 7801** and state **“STORM DAMAGE”** including **location** and **nature of injuries**.
7. Monitor Radio Stations for information (refer to front cover for stations)

# Earthquake

## During An Earthquake

Remove Anyone From Immediate Danger If Safe To Do So

### If Inside

1. Stay inside.
2. Don't use lifts or stairs.
3. Take shelter in doorways, under desks, or down beside an internal wall. Drop Cover Hold
4. Stay clear of large areas with glass windows, glass atrium's, or glass roofs.
5. Keep away from windows or objects that could fall on you.

### If Outside

1. Stay outside.
2. Take shelter clear of buildings, trees, power lines or other potential hazards.

## When the Earthquake Stops

1. Check for signs of Fire, Electrical, Hazardous Material Spill or Major Structural Damage.
2. Account for all staff, students and visitors if possible. Treat any minor injuries.
3. Do not evacuate unless area is immediately threatened or instructed to do so.  
**Do Not Use Lifts – Use Stairwells.**
4. Await instructions. If telephones are working DO NOT contact the Tabernacle office unless immediate assistance is required.
5. Close all smoke stop doors in your area.
6. Access First Aid Kits Civil Defence kits as necessary
7. Listen to the radio for information and advice (refer to front cover for stations)

**– Expect After Shocks –**

# Hostages

1. Ensure personal safety. Do not become a hostage yourself.
2. If possible immediately **DIAL 111 REQUEST POLICE** and state “**HOSTAGE**”, giving **exact location** and **details of events**.

If possible activate the **emergency alarm** (white box) and/or **notify the Church Office on 377 4063 ext 7801**.

3. Secure immediate area. Close doors.
4. Observe:
  - Number of persons taken
  - Number and description of captors
  - Any weapon.
5. Document any threats or demands if possible.
6. Request all witnesses to remain until police arrive and speak to them.
7. Restrict entry to area until Security Staff arrive.
8. Do not speak to media.

## Becoming a Hostage

1. Follow the captors instructions.
2. Speak only when spoken to.
3. Be as calm as possible, as the captor may use your emotions to his/her advantage.
4. Sit down if possible, to avoid appearing aggressive.
5. Do not make any suggestions to the hostage-taker.

# Sexual Assault

## If You Are a Victim of a Sexual Assault

Get to a safe place.

Call out for help or activate the emergency alarm (white box).

**DIAL 111 REQUEST POLICE** or ask someone to ring for you and state “**SEXUAL ASSAULT**” giving **exact location**.

**Notify the Church Office on 377 4063 ext 7801.** Tabernacle Staff will seek to arrange any emergency and medical help needed.

Do not delay reporting an incident.

## If You Witness a Sexual Assault

Everyone is asked to assist in making the Church a safe place by being alert to suspicious situations and promptly reporting them.

If person is harmed or incident is in progress **immediately contact Police Dial 111 or activate the emergency alarm**

Notify the Church Office on 377 4063 ext 7801 to report the incident, including the following:

- Nature of the incident
- Location of the incident
- Description of person(s) involved
- Description of property involved.

Follow the instructions of Tabernacle Staff.

Stay with the victim, providing comfort and support until Tabernacle staff arrive.

If person is harmed or incident is in progress **immediately contact Police Dial 111**

# Gas Leak

**If it is a gas leak, do not use mobile phones, hand held radios, electronic equipment or light flammable material in immediate vicinity!**

1. If you discover a serious Gas Leak, warn those nearby!
2. Activate gas valve shut off procedure if operating in a Laboratory / Workshop
3. If safe to do so, turn off the ventilation, machinery and ensure that naked flames are extinguished and check that the nearest gas isolator switch is off.
4. Remove & Evacuate occupants from immediate area
5. **CONTACT FIRE SERVICE DIAL 111**
6. Activate The Buildings Fire Alarm system
7. Assign a person to meet arriving **Fire Service / Inform Building Warden**
8. Evacuate the building immediately, avoiding the area of contamination as best as possible, close doors.
  - a. Assemble 300 metres upwind of contaminated area.
  - b. Follow Instructions of Fire Service, Building Warden and Church staff
9. After you have evacuated the area, in a safe area **Notify the Church Office on 377 4063 ext 7801** from a landline and state **“GAS LEAK”** giving **exact location** and **type of material involved**. Tabernacle staff will seek to arrange any emergency/medical help needed
10. Ensure all occupants switch off phone and do not smoke within danger zone.
11. Do not re-enter building or area until you have received "ALL CLEAR" instruction from Building Warden or Fire Service



# Power Outage

## During Power Outage

Remain Calm; provide assistance to others if necessary.

Locate torches & check immediate area for fire or cause of outage within building

Cease all work, switch off appliances and machinery

Notify the Church Office about the outage on 377 4063 ext 7801

Campus-wide telephone communications may be disrupted during such events. Runners may be dispatched to inform occupants.

If evacuation is necessary, move cautiously. Lighted signs will indicate **EXITS** where available

Ensure someone remains with any disabled persons who become stranded as a result of the outage. If emergency assistance is required, call **the Tabernacle office on 377 4063 ext 7801**

Passengers stranded in lifts will be able to communicate with the Lift Company direct from the lift car during an outage.

In labs, specific protocol and procedures will operate during a power outage. Ensure you are aware of these requirements.

Keep all refrigerators and freezers closed during an outage.

## Important Notices

Treat all electrical equipment as live, as power may be restored at any time without notice.

# Bomb Threat

**Do Not Use A Mobile Phone or Set Off the Fire Alarms.  
They May Trigger an Explosion**

Keep Calm – Treat As Genuine

There are two types of Bomb Threats:

## 1. Specific

Information/location will be given about the device, or a suspicious item and/or location.

**Specific Threat** - On a landline **Notify the Church Office on 377 4063 ext 7801**, stating you have received a “**SPECIFIC BOMB THREAT**”. If possible recall exact wording of threat.

## 2. Non-Specific

No information given other than e.g. “There is a Bomb in the Building”.

If possible ask and record answers to:

- *Where is the bomb?*
- *What time will it explode?*
- *What does it look like?*
- *What will cause it to explode?*
- *What kind of bomb is it?*
- *Why did you place the bomb?*

Note anything about the caller:

- *Age, Sex, Race*
- *Speech*
- *Accent*
- *Background noise*

Non-Specific Threat - On a landline **notify the Church Office on 377 4063 ext 7801** stating you have received a “**NON-SPECIFIC BOMB THREAT**”.

If a suspicious object or area is found – LEAVE IT AS IT IS.

**Notify the Church Office on 377 4063 ext 7801** and provide as many details as you can. Evacuate the area, leave doors and windows open.

## Suspected Mail Bomb

- Do not open or cut strings
- If already lifted, gently lower to a level surface, otherwise leave as it is
- Evacuate immediate area to a safe area
- Leave doors and windows open
- On Landline **notify the Church Office on 377 4063 ext 7801** and state “**MAIL BOMB**” giving exact location and details

# Hazardous Materials Alert

**If it is a gas or a hazardous material, electronic equipment or light flammable material within proximity of area!**

If the release of a hazardous chemical or gas is affecting people in your area, immediately:

1. **REMOVE** anyone in immediate danger only if safe to do so. DO NOT allow other people in the area. If anyone is contaminated, set up an isolation area. If available and only if it is safe to do so, put on personal protective equipment, observe and support the person until Emergency Services arrive. DO NOT put yourself at risk.

2. **ISOLATE** the hazardous material by clearing the area, close the doors. If safe to do so turn off isolator switches, ventilation & machinery. DO NOT touch suspect material.

### 3. **ACTIVATE**

If it is a “**GAS**” or “**HAZARDOUS MATERIAL ALERT**”, shout a warning, pass the alarm by word of mouth in immediate area

Where threat is considered serious **Immediately contact Fire Service Dial 111**, give **exact location** and **type of material involved**

- **Direct someone to meet with Fire Service**
- **Notify the Church Office on 377 4063 ext 7801**

Only Activate Fire Alarm for complete evacuation of building where life threatening situation exists or on instruction from Fire Service

Occupants should evacuate upwind or to high ground of area (follow instructions of Fire Service and Building & Floor Wardens)

### 4. **CONTAIN**

- Don't risk contact with material or allow spread.
- Do not smell, touch, or taste.
- Close doors between you and the hazardous material.

# Active Shooter

## Active Shooter outside of Building

1. If you are in a class room, dorm or office, stay there and secure door.
  - Use furniture or a wedge if door is unable to be locked
2. Stay clear of windows, cover windows in doors, Turn off lights
3. Stay low on floor or under or behind solid furniture and walls
4. Assess alternative means of escape e.g. windows
5. Stay quiet
6. **Dial 111**, Request Police – Note your location, number of people in room
7. Remain in place until you receive all clear from Police
8. Do not respond to unfamiliar voices as shooter may be trying to lure people out. Confirm that it is a police officer before responding.
9. Follow Police Instructions when they have arrived on scene and
  - Do not carry bags or any other personal items. Leave hands free and showing.

## If you are in open areas of Campus

- Be alert & take shelter behind solid objects where bullets will not penetrate e.g. cars, walls, trees
- Remain out of view.
- Follow police instructions, keep hands visible

## After Active shooter has left room / building / campus

- Where possible make phone contact with Police
- Follow Police instructions
- Keep hands visible and do not carry bags or other items

# Safe Evacuation of People with Disabilities

## During an Evacuation

### For Assisting a Disabled Person with mobility issues

1. Relocate the person with a disability to a safe area; this is generally an EXIT stairwell if safe to do so.
  - a. Allow Stairwell to become free of evacuating occupants prior to entering lobby
2. Ensure all smoke stop doors are closed.
3. Report location of the person to the Church Office, Office Manager or other evacuating staff.
4. Tabernacle staff to report location of the person to the Building Warden and Fire Service.
5. Find a buddy to stay with the person and/or ensure mobile phone communication.
6. If required, wait for the Fire Service Officers to come and assist.
7. If person is able to EXIT via stairwell even slowly do proceed. Provide support. Step aside if more people are encountered behind you

### For a Disabled Person with mobility issues

1. If you are able, go to a safe area, this is generally a stairwell if safe to do so.
2. Ensure that you close all doors.
3. Make sure that the on-site staff/leaders knows of your presence and location.
4. On-site staff/leader to report your location to the Building Warden and Fire Service.
5. If possible keep a buddy with you or have a mobile phone for communication.
6. If required, wait for the Fire Service Officers to come and assist you. Contact the Church Caretaker or emergency services on 111 if alone.

As soon as possible, notify the Church Office on 377 4063 ext 7801  
of your location

## After an Evacuation

Review your personal safety plan. Ensure that the Building and Floor Warden and other staff members who work with you are fully informed of the assistance needed. Have your name entered on the Assistance Register